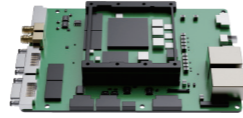
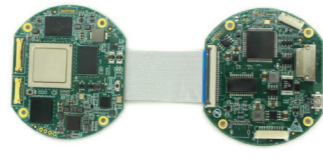
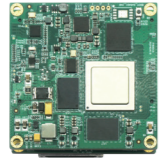


Embedded Image Processing Board



Model	LD-EVM-8-3-4-006-PS	LD-EVM-8-3-4-006-BM	LD-EVM-4-1-1-020-CMS
CPU	Rockchip RK3588, octa-core 64-bit	Rockchip RK3588, octa-core 64-bit	Ascend 310B, 4×TAISHAN V200M@1.6GHz
NPU	6TOPS@INT8	6TOPS@INT8	20TOPS@INT8
GPU	ARM Mali-G610 MC4	ARM Mali-G610 MC4	ARM Mali G52
Video Input	SDI×1, PAL×1	4-Lane MIPI CSI×1, 2-Lane MIPI CSI×1, BT.1120×1	SDI×2, MIPI CSI×2, Camera Link (Full×1 / base×2)
Video Output	SDI×1, HDMI×1	/	/
Network Output	1 Gigabit/100Mbps auto-sensing Ethernet port	1 Gigabit/100Mbps auto-sensing Ethernet port	2 Gigabit/100Mbps auto-sensing Ethernet ports
Power Supply	DC12V±1V	DC12V±1V	DC12V±1V
Dimensions	70mm×70mm×17mm	Φ70mm×17.2mm	140mm×95mm



Model	LD-ECM-41D8-I-JYF	LD-ECM-41D20-I-JYF	LD-ECM-1610B176-I-FMC
CPU	Ascend 310B, 4×TAISHAN V200M@1.6GHz	Ascend 310B, 4×TAISHAN V200M@1.6GHz	Ascend 310B, 16×TAISHAN V200M@1.9GHz
NPU	8TOPS@INT8, 4TFLOPS@FP16, 1TFLOPS@FP32	20TOPS@INT8, 10TFLOPS@FP16	176TOPS@INT8; 88 TFLOPS@FP16
GPU	ARM Mali G52 Single-core	ARM Mali G52 Single-core	/
Audio & Video Interface	HDMI Output×1, MIPI CSI×2, MIPI DSI×1, I2S×1	HDMI Output×1, MIPI CSI×2, MIPI DSI×1, I2S×1	/
Communication Interface	RGMI×2, SERDES×8, UART×7, I2C×4, SPI×1, PWM×3, EMMC×1, USB2.0×2, GPIO	RGMI×2, SERDES×8, UART×7, I2C×6, SPI×1, PWM×4, EMMC×1, USB2.0×2, GPIO	SERDES×16, UART×6, I2C×3, CAN×2, SPI×2, MDIO/MDC×2, GPIO×14
Network Model	Yolo, ResNet, Vit, LSTM, MobileNet, VGG, SSD	Yolo, ResNet, Vit, LSTM, MobileNet, VGG, SSD	Yolo, ResNet, Vit, LSTM, MobileNet, VGG, SSD
Programming Framework	TensorFlow, PaddlePaddle, PyTorch, MindSpore	TensorFlow, PaddlePaddle, PyTorch, MindSpore	TensorFlow, PaddlePaddle, PyTorch, MindSpore
Dimensions	60mm×55mm×9.7mm	63mm×64mm×10mm	80mm×140mm

Xi'an Zhongke Lead IR-Tech Co.,Ltd.

Tel: +86-29-81106672 | Email: sales@lead-ir.com  
 Add: Building 8,Hard Technology Enterprise Community No.3000,Biyuan 2nd Rd,  
 High-Tech Zone Xi'an,Shaanxi,China,710117

Version: 202604



Lynn



Jessica

LEADIR

Xi'an Zhongke Lead IR-Tech Co.,Ltd.

Founded in 2015, Xi'an Zhongke Lead IR-Tech Co., Ltd. specializes in the R&D and manufacturing of intelligent integrated optoelectronic systems.

With more than 400 employees, over 120 patents, a total area of over 60,000 square meters and 600 sets of advanced equipment, the company has developed three core product lines:

- Intelligent optoelectronic equipment, including thermal imaging cameras, optoelectronic systems and related optical components;
- Satellite core components and payloads, such as laser communication payloads, SADA drive units and QV antenna drive mechanisms;
- Precision opto-mechatronic manufacturing, covering precision optical processing, precision mechanical manufacturing and precision opto-mechatronic assembly.

Our products are widely used in commercial aerospace, testing ranges, low-altitude economy and other fields, and have been well received by the market.



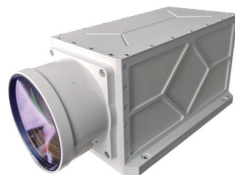
SWIR

TEC Cooled SWIR Camera



Model	Resolution	Frame Rate	Interface	Spectral Range
SWIR-MOD-0321-CL50	640×512@15μm	50Hz	CameraLink/PAL	0.9-1.7μm
SWIR-MOD-0321-SDI25	640×512@15μm	25Hz	SDI 1080p/PAL	0.9-1.7μm
SWIR-MOD-0321-SDI50	640×512@15μm	50Hz	SDI 720p/PAL	0.9-1.7μm
SWIR-MOD-0321-CL200	640×512@15μm	200Hz	CameraLink	0.9-1.7μm
SWIR-MOD-0321-CL500	640×512@15μm	500Hz	CameraLink	0.9-1.7μm

SWIR 640 Continuous Zoom Camera



Model	Resolution	Frame Rate	Interface	F#
SWIR-CAM-0321-F40-320-SDI50	640×512@15μm	40mm~320mm	HD-SDI	2.2
SWIR-CAM-0321-F88-1200-SDI50	640×512@15μm	88mm~1200mm	HD-SDI/PAL	5.9-10.0
SWIR-CAM-0321-F15-300-SDI50	640×512@15μm	15mm~300mm	HD-SDI	4.0
SWIR-CAM-0321-F20-260-SDI50	640×512@15μm	20mm~260mm	HD-SDI	3.0-5.0
SWIR-CAM-0321-F30-390-SDI50	640×512@15μm	30mm~390mm	HD-SDI	5.0-7.0

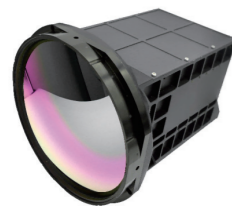
MWIR

MWIR 640 Continuous Zoom Camera



Model	Resolution	Focal length	Interface	F#
MWIR-CAM-03S5-F23.2~640-4.0CL	640×512@15μm	23.2mm~640mm	CameraLink/SDI	4.0
MWIR-CAM-03S5-F50~900-4.0CL	640×512@15μm	50mm~900mm	CameraLink/SDI	4.0
MWIR-CAM-03L5-F18~275-5.5CL	640×512@15μm	18mm~275mm	CameraLink/SDI	5.5
MWIR-CAM-03S5-F60~600-2.0CL	640×512@15μm	60mm~600mm	CameraLink/SDI	2.0
MWIR-CAM-03S5(2)-F100~400-2.0CL	640×512@25μm	100mm~400mm	CameraLink/SDI/PAL	2.0
MWIR-CAM-03S5-F40~200-2.0CL	640×512@15μm	40mm~200mm	CameraLink/SDI	2.0
MWIR-CAM-03S5-F60~360-4.0CL	640×512@15μm	60mm~360mm	CameraLink/SDI	4.0

MWIR 1280 Continuous Zoom Camera



Model	Resolution	Focal length	Interface	F#
MWIR-CAM-13S0-F22~720-4.0CL	1280×1024@10μm	22mm~720mm	CameraLink/SDI	4.0
MWIR-CAM-13S2-F22~720-4.0CL	1280×1024@12μm	22mm~720mm	CameraLink/SDI	4.0
MWIR-CAM-13S7-F25~150-2.0CL	1280×1024@7.5μm	25mm~150mm	CameraLink/SDI	2.0
MWIR-CAM-13S0-F50~900-4.0CL	1280×1024@10μm	50mm~900mm	CameraLink/SDI	4.0
MWIR-CAM-13S2-F50~900-4.0CL	1280×1024@12μm	50mm~900mm	CameraLink/SDI	4.0
MWIR-CAM-13S5-F50~900-4.0CL	1280×1024@15μm	50mm~900mm	CameraLink/SDI	4.0

LWIR

LWIR 640 Continuous Zoom Camera



Model	Resolution	Focal length	Interface	F#
LWIR-CAM-03S5-F40~200-2.0CL	640×512@15μm	40mm~200mm	CameraLink/SDI	2.0
LWIR-CAM-03S5-F50~340-2.0CL	640×512@15μm	50mm~340mm	CameraLink/SDI	2.0

Electro-Optical Panoramic Search & Tracking System



Skyguard-I



Skyguard-II



Skyguard-II (Pro)



Skyguard-III

Model	LAE-LIDAR-SRF0505-0101	ALS-LIDAR-SRF0503-0301	LAE-LIDAR-SRF0504-0401	LAE-LIDAR-SRF0301-0201
IR Search	3Km (DJI Phantom 4)	3Km (DJI Phantom 4)	3.5Km (DJI Phantom 4)	1.2Km (DJI Phantom 4)
IR Tracking	5Km (DJI Phantom 4)	3.5Km (DJI Phantom 4)	4Km (DJI Phantom 4)	1.8Km (DJI Phantom 4)
Visible light	5Km (DJI Phantom 4)	5Km (DJI Phantom 4)	5Km (DJI Phantom 4)	3Km (DJI Phantom 4)
Laser	3Km (DJI Phantom 4)	3Km (DJI Phantom 4)	3Km (DJI Phantom 4)	2Km (DJI Phantom 4)
Radar	8km (RCS:0.01m <sup>2</sup> , UAV)	/	/	/
Search speed	≥2s / Circle	≥2s / Circle	≥1s / Circle	≥2.5s / Circle

Electro-Optical Tracking System



Skypatrol-I



Skypatrol-II



Skypatrol-III

Model	LAE-EOTS-ARF0302-0201	LAE-EOTS-SNR0502-0402	LAE-EOTS-ARF0302-0102
IR Tracking	2.2Km (DJI Phantom 4)	2.5km (Human) ; 6km (Vehicle)	2.2Km (DJI Phantom 4)
Visible light	3Km (DJI Phantom 4)	5km (Human) ; 10km (Vehicle)	3Km (DJI Phantom 4)
Laser	2Km (DJI Phantom 4) (Optional)	/	2Km (DJI Phantom 4)
SWIR	/	5km (Human) ; 10km (Vehicle)	/

\*Remark: Extended detection range is customizable upon request.



Micro Electro-optical Pod (EO/IR/LRF)

MODEL	Sphere diameter	Weight	Thermal (Recognition)	Visible light (Recognition)	Laser Range
ALS-POD-3RF0180-0101	φ180mm	≤4kg	≥1.9km (4m×6m)	≥7km (4m×6m)	≥5.0km



Ultra Compact UAV Visual Navigation Payload (EO/IR/LRF)

MODEL	Sphere diameter	Weight	Thermal (Recognition)	Visible light (Recognition)	Laser Range
ALS-POD-3RF0095-0201	φ95mm	≤1.5kg	≥1.2km (4m×6m)	≥1.2km (4m×6m)	≥1.5km